

FASTER 2020



English



460 TH

s 4

460 i

s 5

495 CC

s 6

495 CX

s 7

525 SC

s 8

525 CC

s 9

545 SC

s 10

545 CC

s 11

570 SC NEW!

s 12

570 CC NEW!

s 13

625 SC

s 14

625 CC

s 15

635 SC

s 16

635 CC

s 17



Aluminium Boats

UNCOMPROMISING FINNISH HANDICRAFT - BUILT TO LAST

Faster aluminium boats are the result of ambitious product development by skillful Finnish designers and the boat building masters' passionate attitude towards boat manufacturing. Faster is no mass product - all our boats are made meticulously by hand.

The Faster boats are designed and manufactured at the Juha Snell Oy factory in Kellokoski, Finland. Distribution and marketing is handled by the family-owned company Oy Brandt Ab, based in Vantaa, Finland.

Juha Snell Oy is a family-owned company founded back in 1974. The first Faster aluminium boats were introduced to the public in 1978.



CAREFREE BOATING

With the quality materials and well thought details, Fasters are made for the users. All the boat models are hand-made in Finland out of untreated marine aluminum thicker than most boat manufacturers use, making Faster boats stronger and more durable than other aluminum boats. The premium boat maintains its value well for years.

Environmental issues are also important to Juha Snell Oy. That's why all the Faster boats are made out of recyclable materials



Length
(Total length)



Width



Weight



Number of
passengers



Total load
capacity



Engine



CE-approval



Fixed
fuel tank



Separate
fuel tank

460 TH



THE COMPACT FISHERMAN'S FRIEND



Faster 460 TH is a durable and sturdy open-layout aluminum boat with a tiller-handle outboard engine. The boat has the same construction as its sister-model 460 i, making it a safe choice for e.g. recreational fishing and load transporting to and from the summer house. The Faster go-to feature, the unique quick-fix fastening rails for accessories, are present also in this Faster model and run along almost the entire insides of the boat. On these rails you can easily and quickly fasten additional accessories to make the 460 TH suited for the situation at hand. On the accessories list you can find e.g. different storage boxes, seats and load binding links. The boat comes with side railings as standard, and on the railings you have the possibility to mount e.g. fishing rod holders.

STANDARD EQUIPMENT

- ✓ Side railings HST
- ✓ Manual bilge pump
- ✓ 78 cm wide storage/seating boxes
- ✓ Navigation light
- ✓ Paddle
- ✓ Hook for trailer/locking
- ✓ Sensor frame
- ✓ Fire extinguisher
- ✓ 12 V outlet
- ✓ Swimming ladder
- ✓ Lockable storage units

ACCESSORIES

- × Shark fin bow rail
- × Set of bow railings
- × Cushion for box 44 cm
- × Cushion for box 44 cm R20
- × Cushion for box 78 cm
- × Cushion for box 78 cm R20
- × Cushion for box 118 cm
- × Cushion for box 118 cm R20
- × Seat box 44 cm
- × Seat box 78 cm
- × Seat box 118 cm
- × Folding bench 78 cm
- × Equipment pack incl. storage bag
- × Line reel + anchor rack
- × Load securing loop
- × Rope box / step
- × Fender holder
- × Transducer bracket, adjustable
- × Mounting rack for bow engine
- × Table + table foot, for c-rail fitting



4,60 m
(4,70 m)



1,85 m



300 kg



5 persons



375 kg



20 - 50 hp

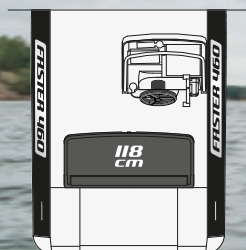


CE/C



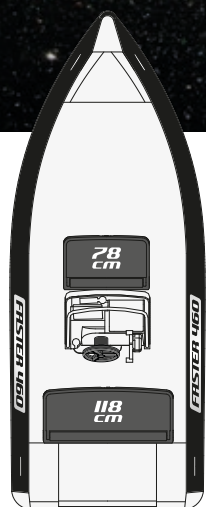
460 i

Moveable steering console



TAKES YOU WHERE YOU WANT TO GO, REGARDLESS OF THE TYPE OF SHORE

Alone, with a friend or the whole family – all the way, even to the rockiest of beaches. Faster 460 i is an aluminum boat for both the fisherman and the summer house boater, an effortless and easy maneuverable all-rounder for seas and lakes alike. In the 460 i model the steering console can be moved according to your needs, you can either have it as a side console on the starboard side or as a center console. This way it easily adapts to your own needs. Moving around in the boat is safe and effortless, and loading it is easy and carefree. Faster 460i comes standardly equipped with hydraulic steering, Trolling Control, a 12 V outlet and Honda Marine pre-rigging.



STANDARD EQUIPMENT

- ✓ Raymarine Axiom 9"
- ✓ Hydraulic steering
- ✓ Trolling Control
- ✓ Moveable steering console
- ✓ 78 cm wide storage/seating boxes
- ✓ 118 cm wide storage/seating boxes
- ✓ Glove compartment in the console
- ✓ Manual bilge pump
- ✓ Side railings HST
- ✓ Navigation light
- ✓ Paddle
- ✓ Hook for trailer/locking
- ✓ Sensor frame
- ✓ 12 V outlet
- ✓ Fire extinguisher
- ✓ Lockable storage units

ACCESSORIES

- × Shark fin bow rail
- × Set of bow railings
- × Stern canopy
- × Console cover
- × Padded backrest
- × Padded backrest R20
- × Cushion for box 44 cm
- × Cushion for box 44 cm R20
- × Cushion for box 78 cm
- × Cushion for box 78 cm R20
- × Cushion for box 118 cm
- × Cushion for box 118 cm R20
- × Seat box 44 cm
- × Seat box 78 cm
- × Seat box 118 cm
- × Folding bench 78 cm
- × Equipment pack incl. storage bag
- × Line reel + anchor rack
- × Load securing loop
- × Rope box / step
- × Fender holder
- × Transducer bracket, adjustable
- × Raymarine RV-100 3D upgrade
- × Raymarine 12" upgrade
- × Mounting rack for bow engine
- × Table + table foot, for c-rail fitting



4,60 m
(4,70 m)



1,85 m



330 kg



5 persons



375 kg



30 - 50 hp



CE/C



495 CX



THE ADAPTABLE SIDE CONSOLE BOAT

The popular 495 CX is a sturdy multitasker that offers excellent driving properties and plenty of shelter from wind for four. One of its virtues is the console door, which has been placed in-between the wide side console and the port side freeboard – a solution some questioned at first, but further along found extremely well-working. The driver sits on the left side of the wide side console and thus in the middle of the boat, giving him/her the best control of the boat, even when the boat is driven solo. As the other Faster models, the 495 CX standard package also includes e.g. hydraulic steering, Trolling Control and a 9" Raymarine multi-function chartplotter (if bought together with a Honda outboard). The comprehensive list of optional accessories allows the boat owner to easily adapt the boat to their own use.

STANDARD EQUIPMENT

- ✓ Raymarine Axiom 9"
- ✓ Hydraulic steering
- ✓ Trolling Control
- ✓ Side door
- ✓ Adjustable shell seats
- ✓ 118 cm wide storage/seating boxes
- ✓ Glove compartment in the console
- ✓ Integrated 65 liter fuel tank
- ✓ Fuel filter
- ✓ Manual bilge pump
- ✓ Side railings HST
- ✓ Navigation light
- ✓ Paddle
- ✓ Hook for trailer/locking
- ✓ Sensor frame
- ✓ 12 V outlet
- ✓ Fire extinguisher
- ✓ Lockable storage units

ACCESSORIES

- × Stern canopy
- × Console Cover
- × Padded backrest
- × Padded backrest R20
- × Cushion for box 44 cm
- × Cushion for box 44 cm R20
- × Cushion for box 78 cm
- × Cushion for box 78 cm R20
- × Cushion for box 118 cm
- × Cushion for box 118 cm R20
- × Seat box 44 cm
- × Seat box 78 cm
- × Seat box 118 cm
- × Comfort seat incl. seat cover
- × Comfort seat R20 incl. seat cover
- × Comfort swing seat incl. seat cover
- × Foldable seat 78
- × Equipment pack incl. storage bag
- × Line reel + anchor rack
- × Load securing loop
- × Rope box / step
- × Fender holder
- × Transducer bracket, adjustable
- × Raymarine RV-100 3D upgrade *
- × Raymarine 12" upgrade
- × Mounting rack for bow engine
- × Table + table foot, for c-rail fitting



*RV-100 transom transducer includes 3D Real Vision features



4,96 m
(5,06 m)



1,97 m



470 kg



6 persons



550 kg



40 - 60 hp

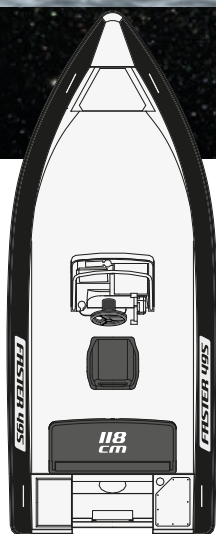


CE/C



65 litre

495 CC



TAKES YOU WHERE YOU NEED, WHEN YOU NEED TO

Faster 495 CC is a center console boat that is suited for all weathers, effortless to maneuver. It is especially suited for sea transfers and leisure fishing, but as all Faster models it is easily transformed to your needs. The durable aluminum hull, without lifting strakes, makes smooth rides through the waves and the close to non-existent planning threshold makes the drive even and suave. The steering console in 495 CC is placed in the middle of the boat and the driver sits on a separate seat. The standard version of the boat has a 118 cm wide storage box, which is placed in the stern and fastened on the clever mounting rail which runs along the inner sides of the boat. On these rails you can easily add other storage boxes, fender holders etc.

Faster 495 CC, although its relatively small size, has the driving properties of a larger boat and a comprehensive standard equipment.

STANDARD EQUIPMENT

- ✓ Raymarine Axiom 9"
- ✓ Hydraulic steering
- ✓ Trolling Control
- ✓ Adjustable shell seats
- ✓ 118 cm wide storage/seating boxes
- ✓ Glove compartment in the console
- ✓ Integrated 65 liter fuel tank
- ✓ Fuel filter
- ✓ Manual bilge pump
- ✓ Side railings HST
- ✓ Navigation light
- ✓ Paddle
- ✓ Hook for trailer/locking
- ✓ Sensor frame
- ✓ 12 V outlet
- ✓ Fire extinguisher
- ✓ Lockable storage units

ACCESSORIES

- × Stern canopy
- × Console cover
- × Padded backrest
- × Padded backrest RM20
- × Cushion for box 44 cm
- × Cushion for box 44 cm R20
- × Cushion for box 78 cm
- × Cushion for box 78 cm R20
- × Cushion for box 118 cm
- × Cushion for box 118 cm R20
- × Seat box 44 cm
- × Seat box 78 cm
- × Seat box 118 cm
- × Comfort seat incl. seat cover
- × Comfort seat R20 incl. seat cover
- × Comfort swing seat incl. seat cover
- × Foldable seat 78
- × Equipment pack incl. storage bag
- × Line reel + anchor rack
- × Load securing loop
- × Rope box / step
- × Fender holder
- × Transducer bracket, adjustable
- × Raymarine RV-100 3D upgrade *
- × Raymarine 12" upgrade
- × Mounting rack for bow engine
- × Table + table foot, for c-rail fitting

*RV-100 transom transducer includes 3D Real Vision features



4,96 m
(5,06 m)



1,97 m



440 kg



6 persons



550 kg



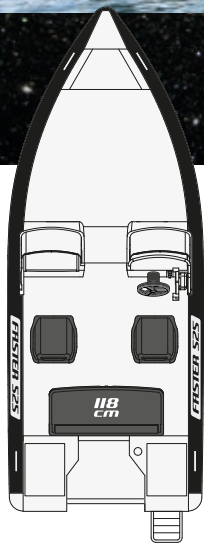
40 - 60 hp



CE/C



65 litre



ENJOYABLE BOATING IN ALL CONDITIONS

Faster 525 SC is a durable dual console boat which seaworthiness and driving properties are truly exceptional and typically more like those of bigger sized boats. Topnotch comfort, equipping and transport capacity, all-in-one. Behind the two consoles, that are united by a sturdy middle door (standard equipment), up to five adults travel safely and sheltered from wind. The stern rope/anchor boxes placed on both sides of the engine well offer significant extra storage space. The other rope/anchor box is possible to detach, in which case an auxiliary engine can easily be installed in its place.

STANDARD EQUIPMENT

- ✓ Raymarine Axiom 9"
- ✓ Hydraulic steering
- ✓ Trolling Control
- ✓ Lockable storage units
- ✓ Adjustable shell seats
- ✓ 118 cm wide storage/seating boxes
- ✓ Glove compartment in the console
- ✓ Door in-between the consoles
- ✓ Manual bilge pump
- ✓ Side railings HST
- ✓ Navigation light
- ✓ Paddle
- ✓ Integrated 100 liter fuel tank
- ✓ Fuel filter
- ✓ Hook for trailer/locking
- ✓ Sensor frame
- ✓ Swimming ladder
- ✓ 12 V outlet
- ✓ Fire extinguisher
- × Foldable seat 78
- × Equipment pack incl. storage bag
- × Line reel + anchor rack
- × Load securing loop
- × Rope box / step
- × Fender holder
- × Transducer bracket, adjustable
- × Trim tabs (excl. control panel)
- × Trim tabs' adjustment panel, basic model
- × Trim tabs' adjustment panel, with indicators
- × Trim tabs' automatic control panel
- × Trim tabs' joystick control
- × Raymarine RV-100 3D upgrade *
- × Raymarine 12" upgrade
- × Mounting rack for bow engine
- × Waterskiing tow pole
- × Table + table foot, for c-rail fitting

ACCESSORIES

- × Stern canopy
- × Console cover
- × Padded backrest
- × Padded backrest R20
- × Cushion for box 44 cm
- × Cushion for box 44 cm R20
- × Cushion for box 78 cm
- × Cushion for box 78 cm R20
- × Cushion for box 118 cm
- × Cushion for box 118 cm R20
- × Seat box 44 cm
- × Seat box 78 cm
- × Seat box 118 cm
- × Comfort seat incl. seat cover
- × Comfort seat R20 incl. seat cover
- × Comfort swing seat incl. seat cover



*RV-100 transom transducer includes 3D Real Vision features



5,25 m
(5,58 m)



2,10 m



530 kg



7 persons



525 kg



50 - 80 hp



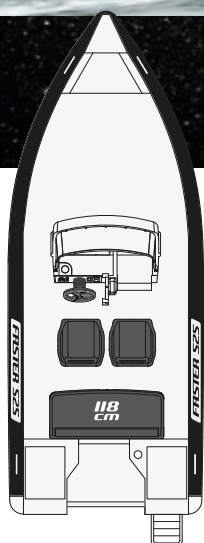
CE/C



100 litre



GO OUT BOATING – WHENEVER, WHEREVER



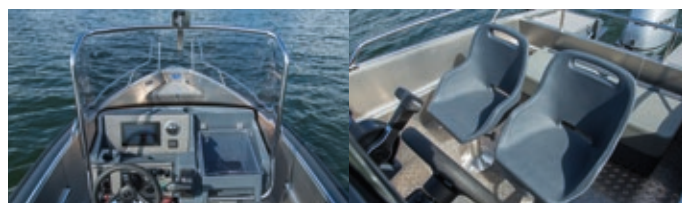
Faster takes you safely to the destination as planned and on time. You can trust the 525 CC even when the weather conditions suddenly change or when the final destination is in a more challenging spot. This center console equipped aluminum boat makes sea journeys fun and comfortable and goods transporting effortless. The sizeable central steering console gives plenty of shelter for the driver and co-driver sitting behind the windshield, as well as sufficient shelter for the passengers on the stern bench. Moving around the boat is hassle-free due to the central console, and there is plenty of space to store away equipment and personal belongings.

STANDARD EQUIPMENT

- ✓ Raymarine Axiom 9"
- ✓ Hydraulic steering
- ✓ Trolling Control
- ✓ Lockable storage units
- ✓ Adjustable shell seats
- ✓ Box for anchor and mooring lines in the stern
- ✓ Glove compartment in the console
- ✓ Manual bilge pump
- ✓ Side railings HST
- ✓ Navigation light
- ✓ Paddle
- ✓ Integrated 100 liter fuel tank
- ✓ Fuel filter
- ✓ Hook for trailer/locking
- ✓ Sensor frame
- ✓ Swimming ladder
- ✓ 12 V outlet
- ✓ Fire extinguisher
- × Swing seat 80 cm with pedestal incl. seat cover
- × Foldable seat 78
- × Equipment pack incl. storage bag
- × Line reel + anchor rack
- × Load securing loop
- × Rope box / step
- × Fender holder
- × Transducer bracket, adjustable
- × Trim tabs (excl. control panel)
- × Trim tabs' adjustment panel, basic model
- × Trim tabs' adjustment panel, with indicators
- × Trim tabs' automatic control panel
- × Trim tabs' joystick control
- × Raymarine RV-100 3D upgrade *
- × Raymarine 12" upgrade
- × Mounting rack for bow engine
- × Mounting rack for bow engine 545
- × Waterskiing tow pole
- × Table + table foot, for c-rail fitting
- × Platform for Fishing

ACCESSORIES

- × Stern canopy
- × Console cover
- × Padded backrest
- × Padded backrest R20
- × Cushion for box 44 cm
- × Cushion for box 44 cm R20
- × Cushion for box 78 cm
- × Cushion for box 78 cm R20
- × Cushion for box 118 cm
- × Cushion for box 118 cm R20
- × Seat box 44 cm
- × Seat box 78 cm
- × Seat box 118 cm
- × Comfort seat incl. seat cover
- × Comfort seat R20 incl. seat cover
- × Comfort swing seat incl. seat cover



*RV-100 transom transducer includes 3D Real Vision features



5,25 m
(5,58 m)



2,10 m



530 kg



7 persons



525 kg



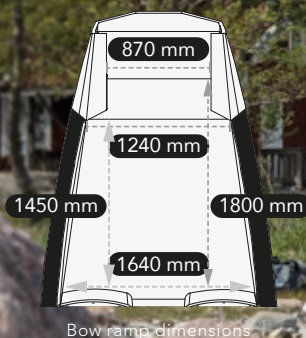
50 - 80 hp



CE/C



100 litre



BENEFITS OF A BOW RAMP WITHOUT COMPROMISING ON DRIVING PROPERTIES

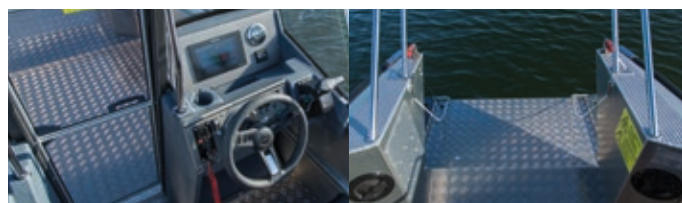
Faster 545 SC is a versatile multitasker with a practical bow ramp and two side consoles. The 87 cm wide ramp makes it easy to load and unload sizeable and bulky equipment – you can even fit a cart-wheel or a two-wheeler on the bow deck. The ramp also facilitates embarking and debarking, even if the beach is rocky, shallow and uneven. The bow ramp is operated electronically via a switch on the console. The 18° V-hull without lifting strakes ensures smooth running even in rough water. Thanks to the genial hull design the boat's driving properties are fully comparable to boats with a sharp bow – a top speed of approximately 34 knots is achieved even with a four-passenger load. The dual consoles together with a middle door offers shelter from wind for driver, co-driver and passengers sitting in the back. Faster 545 SC is suited for various needs – it's perfect not only as a versatile access boat for the summer home by the sea, but also for transporting e.g. divers and sizeable diving equipment, for fishing and leisure rides.

STANDARD EQUIPMENT

- ✓ Raymarine Axiom 9"
- ✓ Lockable storage units
- ✓ Trolling Control
- ✓ Hydraulic steering
- ✓ Manual bilge pump
- ✓ Side railings HST
- ✓ Navigation light
- ✓ Paddle
- ✓ Integrated 100 liter fuel tank
- ✓ Fuel filter
- ✓ Hook for trailer/locking
- ✓ Sensor frame
- ✓ Swimming ladder
- ✓ 12 V outlet
- ✓ Fire extinguisher
- ✓ Adjustable shell seats
- ✓ 118 cm wide storage/seating boxes
- ✓ Glove compartment in the console
- ✓ Door in-between the consoles
- ✗ Foldable seat 78
- ✗ Equipment pack incl. storage bag
- ✗ Line reel + anchor rack
- ✗ Load securing loop
- ✗ Rope box / step
- ✗ Fender holder
- ✗ Transducer bracket, adjustable
- ✗ Trim tabs (excl. control panel)
- ✗ Trim tabs' adjustment panel, basic model
- ✗ Trim tabs' adjustment panel, with indicators
- ✗ Trim tabs' automatic control panel
- ✗ Trim tabs' joystick control
- ✗ Raymarine RV-100 3D upgrade *
- ✗ Raymarine 12" upgrade
- ✗ Mounting rack for bow engine
- ✗ Waterskiing tow pole
- ✗ Table + table foot, for c-rail fitting

ACCESSORIES

- ✗ Stern canopy
- ✗ Console cover
- ✗ Padded backrest
- ✗ Padded backrest R20
- ✗ Cushion for box 44 cm
- ✗ Cushion for box 44 cm R20
- ✗ Cushion for box 78 cm
- ✗ Cushion for box 78 cm R20
- ✗ Cushion for box 118 cm
- ✗ Cushion for box 118 cm R20
- ✗ Seat box 44 cm
- ✗ Seat box 78 cm
- ✗ Seat box 118 cm
- ✗ Comfort seat incl. seat cover
- ✗ Comfort seat R20 incl. seat cover
- ✗ Comfort swing seat incl. seat cover



*RV-100 transom transducer includes 3D Real Vision features



5,45 m
(5,78 m)



2,10 m



670 kg



8 persons



8 persons
(600 kg) + 125 kg



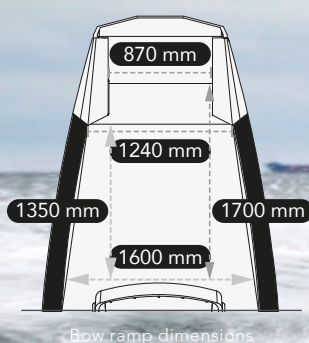
80 - 100 hp



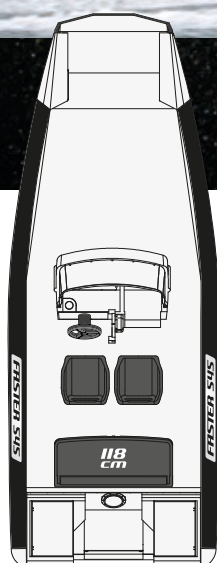
CE/C



100 litre



VERSATILITY AT ITS BEST



The practical bow ramp equipped multitasker Faster 545 CC is a substantial bow ramp equipped all-rounder that makes e.g. transportation of sizeable, bulky goods easy and hassle-free. The 87 cm wide bow ramp, which is easily operated via the switch on the console switch board, facilitates easy access and debarking on stony beaches. You can fit in a cartwheel, a two-wheeler or even certain types of mini ATVs onto the bow deck. Thanks to the genial hull design the driving properties of 545 CC stay true to the Faster brand, even though the bow shape is a tad different from normal sharp bows. The hull cuts waves beautifully and flows through the water smoothly and evenly, at the same time as driving it is extremely fun and addicting. The sizeable central steering console gives plenty of shelter to the driver and co-driver sitting behind the windshield, while maintaining easy access around the boat thanks to the walkaround-ability.

STANDARD EQUIPMENT

- ✓ Raymarine Axiom 9"
- ✓ Lockable storage units
- ✓ Trolling Control
- ✓ Hydraulic steering
- ✓ Manual bilge pump
- ✓ Side railings HST
- ✓ Navigation light
- ✓ Paddle
- ✓ Integrated 100 liter fuel tank
- ✓ Fuel filter
- ✓ Hook for trailer/locking
- ✓ Sensor frame
- ✓ Swimming ladder
- ✓ 12 V outlet
- ✓ Fire extinguisher
- ✓ Adjustable shell seats
- ✓ 118 cm wide storage/seating boxes
- ✓ Glove compartment in the console
- × Swing seat 80 cm with pedestal incl. seat cover
- × Foldable seat 78
- × Equipment pack incl. storage bag
- × Line reel + anchor rack
- × Load securing loop
- × Rope box / step
- × Fender holder
- × Transducer bracket, adjustable
- × Trim tabs (excl. control panel)
- × Trim tabs' adjustment panel, basic model
- × Trim tabs' adjustment panel, with indicators
- × Trim tabs' automatic control panel
- × Trim tabs' joystick control
- × Raymarine RV-100 3D upgrade *
- × Raymarine 12" upgrade
- × Mounting rack for bow engine
- × Waterskiing tow pole
- × Table + table foot, for c-rail fitting

ACCESSORIES

- × Stern canopy
- × Console cover
- × Padded backrest
- × Padded backrest R20
- × Cushion for box 44 cm
- × Cushion for box 44 cm R20
- × Cushion for box 78 cm
- × Cushion for box 78 cm R20
- × Cushion for box 118 cm
- × Cushion for box 118 cm R20
- × Seat box 44 cm
- × Seat box 78 cm
- × Seat box 118 cm
- × Comfort seat incl. seat cover
- × Comfort seat R20 incl. seat cover
- × Comfort swing seat incl. seat cover



*RV-100 transom transducer includes 3D Real Vision features



5,45 m
(5,78 m)



2,10 m



670 kg



8 persons



8 persons
(600 kg) + 125 kg



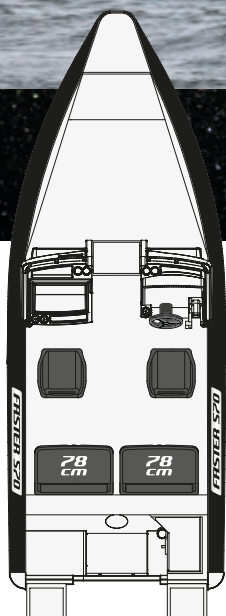
80 - 100 hp



CE/C



100 litre



THROUGH STORMY WATERS

Faster 570 SC is a sturdy double-console boat that takes you where ever you need to go no matter what the weather conditions are. The noveltys outstandingly well equipped and driving characteristics are precise and reliable even when the sea is rough. Boat's dual console gives shelter for up to five passengers. Driver and co-pilot have adjustable shell seats and in the stern there is a wide bench for three. Between the two steering consoles there is a one-piece middle door, significantly improving the shelter in the cockpit. The boat has also been equipped with a canopy storage compartment in the aft, where the stern canopy can be folded away when it's not in use.

With a 115 hp engine the boat goes up to 38 knots. The driver's place is designed to be ergonomic and user-friendly. All gauge, switches and chart plotter are located within reach and well in the driver's eyesight without blocking the visibility. The new console fits up to a 12" chart plotter.

STANDARD EQUIPMENT

- ✓ Raymarine Axiom 9"
- ✓ Lockable storage units
- ✓ Trolling Control
- ✓ Hydraulic steering
- ✓ Manual bilge pump
- ✓ Black side railings HST
- ✓ Navigation lights
- ✓ Paddle
- ✓ Integrated 140 liter fuel tank
- ✓ Fuel filter
- ✓ Hook for trailer/locking
- ✓ Transducer bracket, adjustable
- ✓ Swimming ladder
- ✓ 12 V outlet
- ✓ Fire extinguisher
- ✓ Adjustable shell seats
- ✓ Door in-between the consoles
- ✓ Canopy storage
- ✓ Glove compartment in the console
- ✓ 2 x 78 cm wide storage/seating boxes
- × Foldable seat 78
- × Equipment pack incl. storage bag
- × Line reel + anchor rack
- × Load securing loop
- × Rope box / step
- × Fender holder
- × Transducer bracket, adjustable
- × Trim tabs (excl. control panel)
- × Trim tabs' adjustment panel, basic model
- × Trim tabs' adjustment panel, with indicators
- × Trim tabs' automatic control panel
- × Trim tabs' joystick control
- × Raymarine RV-100 3D upgrade *
- × Raymarine 12" upgrade
- × Mounting rack for bow engine
- × Waterskiing tow pole
- × Table + table foot, for c-rail fitting
- × Driver's windscreen wiper

ACCESSORIES

- × Stern canopy
- × Console cover
- × Padded backrest
- × Padded backrest R20
- × Cushion for box 44 cm
- × Cushion for box 44 cm R20
- × Cushion for box 78 cm
- × Cushion for box 78 cm R20
- × Cushion for box 118 cm
- × Cushion for box 118 cm R20
- × Seat box 44 cm
- × Seat box 78 cm
- × Seat box 118 cm
- × Comfort seat incl. seat cover
- × Comfort seat R20 incl. seat cover
- × Comfort swing seat incl. seat cover



*RV-100 transom transducer includes 3D Real Vision features



5,74 m
(6,15 m)



2,20 m



620 kg



8 persons



700 kg



80 - 115 hp



CE/C



140 litre

NEW!**570 CC**

WHEN YOU DON'T WANT TO COMPROMISE

Faster 570 CC is made for people who don't want to make compromises when they need to go. 570 CC takes you where you need to go, no matter what the weather conditions are. Boat's well placed center console leaves room for moving in the boat. Even in extreme circumstances the boat is trustworthy and easy to control.

The 570 CC is a Faster from the next decade. The whole design of the boat is refreshed, from the hull to consoles and colors. The look is harmonic and driver's place is ergonomic with all the gauge, switches and chart plotter are located within reach and well in the driver's eyesight without blocking the visibility. The boat has Faster's unique quick- x rails on the sides that enable attaching seats, storage boxes etc. according to your needs.

STANDARD EQUIPMENT

- ✓ Raymarine Axiom 9"
- ✓ Lockable storage units
- ✓ Trolling Control
- ✓ Hydraulic steering
- ✓ Manual bilge pump
- ✓ Black side railings HST
- ✓ Navigation lights
- ✓ Paddle
- ✓ Integrated 140 liter fuel tank
- ✓ Fuel filter
- ✓ Hook for trailer/locking
- ✓ Transducer bracket, adjustable
- ✓ Swimming ladder
- ✓ 12 V outlet
- ✓ Fire extinguisher
- ✓ Adjustable shell seats
- ✓ Canopy storage
- ✓ Glove compartment in the console
- ✓ 2 x 78 cm wide storage/seating boxes
- × Swing seat 80 CM with pedestal incl. seat cover
- × Foldable seat 78
- × Equipment pack incl. storage bag
- × Line reel + anchor rack
- × Load securing loop
- × Rope box / step
- × Fender holder
- × Transducer bracket, adjustable
- × Trim tabs (excl. control panel)
- × Trim tabs' adjustment panel, basic model
- × Trim tabs' adjustment panel, with indicators
- × Trim tabs' automatic control panel
- × Trim tabs' joystick control
- × Raymarine RV-100 3D upgrade *
- × Raymarine 12" upgrade
- × Mounting rack for bow engine
- × Waterskiing tow pole
- × Table + table foot, for c-rail fitting
- × Windscreen wiper

ACCESSORIES

- × Stern canopy
- × Console cover
- × Padded backrest
- × Padded backrest R20
- × Cushion for box 44 cm
- × Cushion for box 44 cm R20
- × Cushion for box 78 cm
- × Cushion for box 78 cm R20
- × Cushion for box 118 cm
- × Cushion for box 118 cm R20
- × Seat box 44 cm
- × Seat box 78 cm
- × Seat box 118 cm
- × Comfort seat incl. seat cover
- × Comfort seat R20 incl. seat cover
- × Comfort swing seat incl. seat cover



*RV-100 transom transducer includes 3D Real Vision features



5,74 m
(6,15 m)



2,20 m



620 kg



8 persons



700 kg



80 - 115 hp

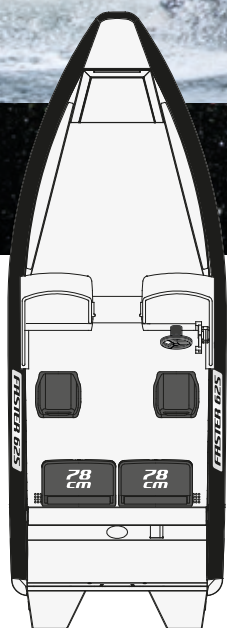


CE/C



140 litre

625 SC



A SPACIOUS AND VERSATILE LEISURE BOAT

Faster 625 SC is a real family boat with two consoles that have been redesigned for this specific model. The boat takes you even to rough shores despite the weather conditions. The hull design is extremely functional, meaning that the Faster 625 models glide through the water smoothly and well-balanced. The sharp bow cuts well through the waves and makes sure that the sea sprays are guided to the sides leaving passengers and baggage dry from splashes.

STANDARD EQUIPMENT

- ✓ Raymarine Axiom 9"
- ✓ Hydraulic steering
- ✓ Trolling Control
- ✓ Lockable storage units
- ✓ Adjustable shell seats
- ✓ 2 x 78 cm wide storage/seating boxes
- ✓ Glass one-part door in-between consoles
- ✓ Driver's windshield wiper
- ✓ Canopy storage
- ✓ Manual bilge pump
- ✓ Side railings HST
- ✓ Navigation light
- ✓ Paddle
- ✓ Integrated 140 liter fuel tank
- ✓ Fuel filter
- ✓ Hook for trailer/locking
- ✓ Sensor frame
- ✓ Swimming ladder
- ✓ Swim platform
- ✓ 12 V outlet
- ✓ Fire extinguisher
- × Comfort swing seat incl. seat cover
- × Foldable seat 78
- × Equipment pack incl. storage bag
- × Line reel + anchor rack
- × Load securing loop
- × Rope box / step
- × Fender holder
- × Transducer bracket, adjustable
- × Transducer bracket, adjustable - YM20
- × Trim tabs (excl. control panel)
- × Trim tabs' adjustment panel, basic model
- × Trim tabs' adjustment panel, with indicators
- × Trim tabs' automatic control panel
- × Trim tabs' joystick control
- × Raymarine RV-100 3D upgrade *
- × Raymarine 12" upgrade
- × Mounting rack for bow engine
- × Table + table foot, for c-rail fitting
- × Drawer fridge

ACCESSORIES

- × Stern canopy
- × Console cover
- × Padded backrest
- × Padded backrest R20
- × Cushion for box 44 cm
- × Cushion for box 44 cm R20
- × Cushion for box 78 cm
- × Cushion for box 78 cm R20
- × Cushion for box 118 cm
- × Cushion for box 118 cm R20
- × Seat box 44 cm
- × Seat box 78 cm
- × Seat box 118 cm
- × Comfort seat incl. seat cover
- × Comfort seat R20 incl. seat cover



*RV-100 transom transducer includes 3D Real Vision features



6,25 m
(6,60 m)



2,35 m



840 kg



10 persons



850 kg



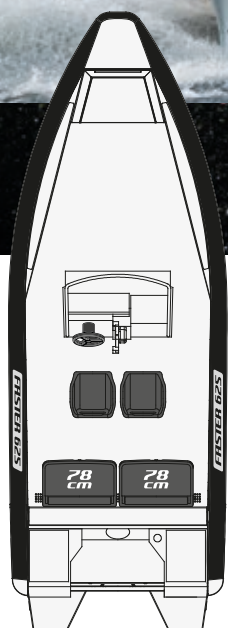
115 - 200 hp



CE/C



140 litre



MULTIFUNCTIONING ACCESS BOAT

Faster 625 CC is a sturdy multifunctioning boat for all weather conditions. The boat is made for demanding use and is easily transformable to your needs with wide range of accessories. Transporting goods and people with this model could not be easier, as the model has been registered for up to ten persons. Faster 625 CC is designed especially for active boaters who need a steady, spacious and smoothly running access or allround boat for various uses. The boat also works well in recreational fishing.

STANDARD EQUIPMENT

- ✓ Raymarine Axiom 9"
- ✓ Hydraulic steering
- ✓ Trolling Control
- ✓ Lockable storage units
- ✓ Adjustable shell seats
- ✓ 2 x 78 cm wide storage/seating boxes
- ✓ Driver's windshield wiper
- ✓ Canopy storage
- ✓ Manual bilge pump
- ✓ Side railings HST
- ✓ Navigation light
- ✓ Paddle
- ✓ Integrated 140 liter fuel tank
- ✓ Fuel filter
- ✓ Hook for trailer/locking
- ✓ Sensor frame
- ✓ Swimming ladder
- ✓ Swim platform
- ✓ 12 V outlet
- ✓ Fire extinguisher

ACCESSORIES

- * Stern canopy
- * Console cover
- * Padded backrest
- * Padded backrest R20
- * Cushion for box 44 cm
- * Cushion for box 44 cm R20
- * Cushion for box 78 cm
- * Cushion for box 78 cm R20
- * Cushion for box 118 cm
- * Cushion for box 118 cm R20
- * Seat box 44 cm
- * Seat box 78 cm
- * Seat box 118 cm
- * Comfort seat incl. seat cover
- * Comfort seat R20 incl. seat cover

- * Comfort swing seat incl. seat cover
- * Swing seat 80 cm with pedestal incl. seat cover
- * Foldable seat 78
- * Equipment pack incl. storage bag
- * Line reel + anchor rack
- * Load securing loop
- * Rope box / step
- * Fender holder
- * Transducer bracket, adjustable
- * Trim tabs (excl. control panel)
- * Trim tabs' adjustment panel, basic model
- * Trim tabs' adjustment panel, with indicators
- * Trim tabs' automatic control panel
- * Trim tabs' joystick control
- * Raymarine RV-100 3D upgrade *
- * Raymarine 12" upgrade
- * Mounting rack for bow engine
- * Table + table foot, for c-rail fitting
- * Accessories rack
- * Side doors
- * T-Top

*RV-100 transom transducer includes 3D Real Vision features



6,25 m
(6,60 m)



2,35 m



840 kg



10 persons



850 kg



115 - 200 hp

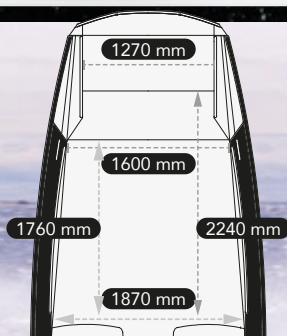


CE/C



140 litre

635 SC

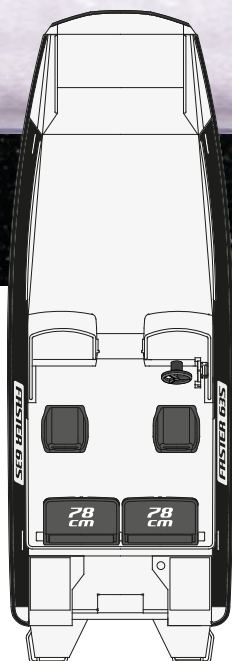


Bow ramp dimensions



MULTITASKER WITH A PRACTICAL BOW RAMP

The 635 SC, which has been equipped with a bow ramp and dual steering consoles, is a leisure boat that doubles as a sturdy workhorse. It is suited not only for transporting bulky and heavy loads, but also as an access boat between the summer house and harbor, as a boat for recreational fishing or even for diving purposes. The electrically operated, well over a meter wide bow ramp is the biggest asset of this model and facilitates not only packing and unpacking, but it also makes embarking and debarking the boat from the bow extremely effortless. The large bow deck even has space for a full-size ATV, which can easily be fastened in place thanks to durable load securing loops on the aluminum deck.



STANDARD EQUIPMENT

- ✓ Raymarine Axiom 9"
- ✓ Sensor frame
- ✓ Lockable storage units
- ✓ Trolling Control
(if sold with Honda outboard motors)
- ✓ Hydraulic steering
- ✓ Manual bilge pump
- ✓ Side railings HST
- ✓ Navigation lights
- ✓ Paddle
- ✓ Glass one-part door in-between consoles
- × Driver's windscreen wiper
- ✓ Integrated 140 liter fuel tank
- ✓ Fuel filter
- ✓ Hook for trailer/locking
- ✓ Swimming ladder
- ✓ 12 V outlet
- ✓ Fire extinguisher
- ✓ Adjustable shell seats
- ✓ Box for anchor and mooring lines in the stern
- ✓ 2 x 78 cm wide storage/seating boxes
- ✓ Glove compartment in the console
- ✓ Canopy storage
- × Comfort swing seat incl. seat cover
- × Foldable seat 78
- × Equipment pack incl. storage bag
- × Line reel + anchor rack
- × Load securing loop
- × Rope box / step
- × Fender holder
- × Transducer bracket, adjustable
- × Trim tabs (excl. control panel)
- × Trim tabs' adjustment panel, basic model
- × Trim tabs' adjustment panel, with indicators
- × Trim tabs' automatic control panel
- × Trim tabs' joystick control
- × Raymarine RV-100 3D upgrade *
- × Raymarine 12" upgrade
- × Mounting rack for bow engine
- × Table + table foot, for c-rail fitting
- × Drawer fridge

ACCESSORIES

- × Stern canopy
- × Console cover
- × Padded backrest
- × Padded backrest R20
- × Cushion for box 44 cm
- × Cushion for box 44 cm R20
- × Cushion for box 78 cm
- × Cushion for box 78 cm R20
- × Cushion for box 118 cm
- × Cushion for box 118 cm R20
- × Seat box 44 cm
- × Seat box 78 cm
- × Seat box 118 cm
- × Comfort seat incl. seat cover
- × Comfort seat R20 incl. seat cover



*RV-100 transom transducer includes 3D Real Vision features



6,35 m
(6,70 m)



2,35 m



835 kg



10 persons



10 persons
(750 kg) + 315 kg



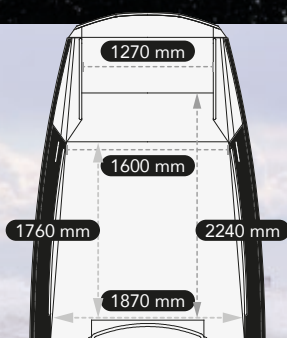
115 - 200 hp



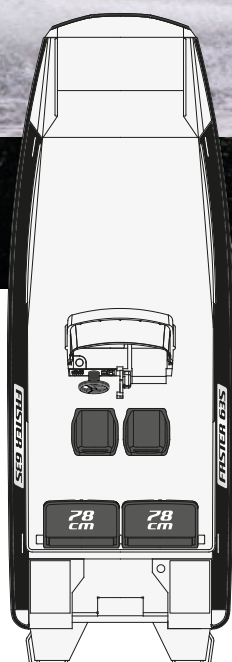
CE/C



140 litre



Bow ramp dimensions



A TRUE COMBINATION OF UTILITY, PROFESSIONAL AND RECREATIONAL BOAT

Originally designed for professionals such as oil spill response and SAR workers, this sturdy and unwavering landing craft is a force to be reckoned with. Faster 635 CC originates as a work boat, which reinforces that the boat is extremely well built, unwavering and sturdy. The whole construction of the boat, the practical bow ramp and the spacious bow area create a variety of different usage purposes for the boat: The easy-attainable deck space is optimal for transporting sizeable loads, for fishing or even for transporting diving equipment - with the bow ramp opened, divers can easily slide into the water from the bow.

STANDARD EQUIPMENT

- ✓ Raymarine Axiom 9"
- ✓ Sensor frame
- ✓ Hydraulic steering
- ✓ Trolling Control
(if sold with Honda outboard motors)
- ✓ Adjustable shell seats
- ✓ 2 x 78 cm wide storage/seating boxes
- ✗ Driver's windscreen wiper
- ✓ Box for anchor and mooring lines in the stern
- ✓ Glove compartment in the console
- ✓ Lockable storage units
- ✓ Canopy storage
- ✓ Manual bilge pump
- ✓ Side railings HST
- ✓ Navigation lights
- ✓ Integrated 140 liter fuel tank
- ✓ Fuel filter
- ✓ Hook for trailer/locking
- ✓ Swimming ladder
- ✓ Paddle
- ✓ 12 V outlet
- ✓ Fire extinguisher
- ✗ Comfort swing seat incl. seat cover
- ✗ Swing seat 80 CM with pedestal incl. seat cover
- ✗ Foldable seat 78
- ✗ Equipment pack incl. storage bag
- ✗ Line reel + anchor rack
- ✗ Load securing loop
- ✗ Rope box / step
- ✗ Fender holder
- ✗ Transducer bracket, adjustable
- ✗ Trim tabs (excl. control panel)
- ✗ Trim tabs' adjustment panel, basic model
- ✗ Trim tabs' adjustment panel, with indicators
- ✗ Trim tabs' automatic control panel
- ✗ Trim tabs' joystick control
- ✗ Raymarine RV-100 3D upgrade *
- ✗ Raymarine 12" upgrade
- ✗ Mounting rack for bow engine
- ✗ T-Top
- ✗ Accessories rack
- ✗ Table + table foot, for c-rail fitting
- ✗ Side doors

ACCESSORIES

- ✗ Stern canopy
- ✗ Console cover
- ✗ Padded backrest
- ✗ Padded backrest R20
- ✗ Cushion for box 44 cm
- ✗ Cushion for box 44 cm R20
- ✗ Cushion for box 78 cm
- ✗ Cushion for box 78 cm R20
- ✗ Cushion for box 118 cm
- ✗ Cushion for box 118 cm R20
- ✗ Seat box 44 cm
- ✗ Seat box 78 cm
- ✗ Seat box 118 cm
- ✗ Comfort seat incl. seat cover
- ✗ Comfort seat R20 incl. seat cover



*RV-100 transom transducer includes 3D Real Vision features



6,35 m
(6,70 m)



2,35 m



835 kg



10 persons



10 persons
(750 kg) + 315 kg



115 - 200 hp



CE/C



140 litre

MAKE YOUR FASTER YOUR DREAM BOAT BY ADDING OPTIONAL ACCESSORIES.



Comfort seat
✓ Cover for
comfort seat



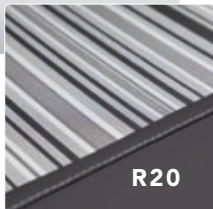
Swing seat,
narrow, 42 cm
✓ Cover for
swing seat



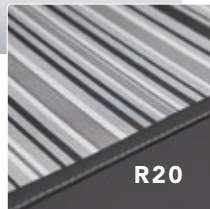
Swing seat,
wide, 80 cm
✓ Cover for
swing seat



Box 44 cm
✓ Seat cushion



Box 78 cm
✓ Seat cushion



Box 118 cm
✓ Seat cushion



Mounting rack
for bow engine



Folding bench
✓ 78 cm



Rope box / step

ACCESSORIES



Trim tabs



Trim tabs' adjustment panel,
with indicators

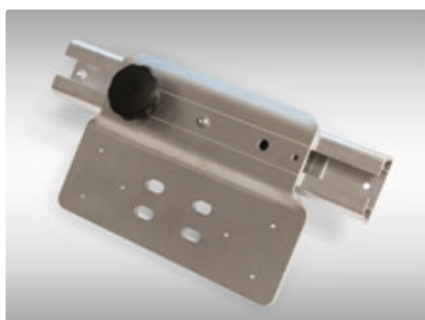


Stern canopy

- ✓ Faster 460 i
- ✓ Faster 495 CC
- ✓ Faster 495 CX
- ✓ Faster 525 SC
- ✓ Faster 525 CC

- ✓ Faster 545 SC
- ✓ Faster 545 CC
- ✓ Faster 570 SC
- ✓ Faster 570 CC

- ✓ Faster 625 SC
- ✓ Faster 625 CC
- ✓ Faster 635 SC
- ✓ Faster 635 CC



Transducer bracket, adjustable



Equipment pack incl.
storage bag

- ✓ 3 x mooring ropes (12 mm/3 m)
- ✓ an anchor rope (12 mm/30 m)
- ✓ 4 x 140x508 mm fenders
- ✓ 4 x fender ropes
- ✓ a 5,5 kg grapnel anchor



Side doors

- ✓ Faster 625 CC
- ✓ Faster 635 CC



OY BRANDT AB

PL 1
01741 Vantaa, Finland
info@brandt.fi

faster.fi/en-en



facebook.com/fasterboats



FasterAluminiumBoats



Faster Aluminium Boats

Due to continues product development Faster withholds the right to changes without prior notice.
Boats in pictures may have extra equipment and differ from standard version.